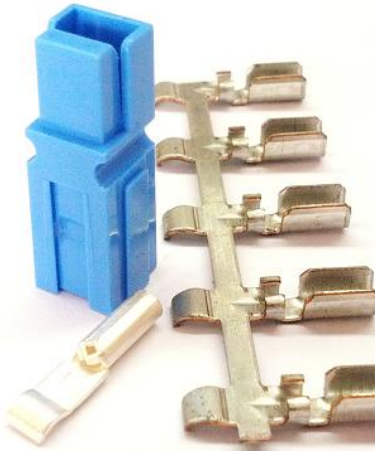
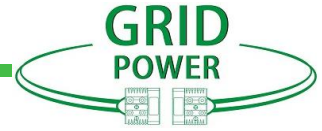


SPC15/45

Single Power Connector



FEATURES

- Flat wiping contact system**
 Minimal contact resistance at high current, wiping action cleans contact surface during connection/disconnection
- Colored modular housings**
 Provides visual identification of proper mating Connector. Color designates recommended application voltage per industry standards
- Molded-in dovetails**
 Secures individual connectors into "keyed" assemblies which prevents misconnection with similar configurations
- Interchangeable genderless design**
 Makes assembly easy and reduces stock

特征

- 平面接触技术**
 强电流下接触电阻最小，断开过程中产生的擦拭动作可清洁接触件表面
- 彩色模块化外壳**
 采用醒目的颜色编码与线材匹配，根据颜色确定行业标准推荐的使用电压
- 组合式模型**
 可单个连接，也可组装多个连接，防呆设计防止因误插
- 互换无公母设计**
 互换性设计，无公母外壳，利于减少库存

PRODUCT SPECIFICATIONS/产品规格

| | | | |
|--|-----------------------------|-----------------------------|-----------------------------|
| Current Rating (Amperes) 额定电流 (安培) | 15 | 30 | 45 |
| Voltage Ratings (Volts) 额定电压 (伏特) | 600 | 600 | 600 |
| Contact Barrel Wire Size (AWG) (mm ²) 适用线径 (AWG) (mm ²) | #16 to #20 1.3 to 0.5 | #12 to #16 3.3 to 1.3 | #10 to #14 5.3 to 2.0 |
| Maximum Wire Insulation Diameter (inches)(mm) 最大绝缘导线直径(英寸) (毫米) | 0.175 4.45 | 0.175 4.45 | 0.175 4.45 |
| AVG Contact Resistance(micro-ohms) 接触电阻 (微欧) | 875 | 600 | 525 |
| Insulation Withstanding Test Voltage (Volts AC/DC) 绝缘耐电压 (交流/直流) | 2200 | 2200 | 2200 |
| Contact Retention Force (lbf) 端子保持力 (磅) | 25 | 25 | 25 |
| Life/寿命 a. No load (Contact/Disconnect Cycles) 无负载 (插拔次数) b. Under Load (Hot Plug 250 cycles @ 120V) 负载状态 (120V 电压执插拔 250 次) | To 10,000 15A | To 10,000 30A | To 10,000 45A |
| Avg. Connection/Disconnect (lbf) 平均插拔力 (磅) | 3 | 3 | 3 |
| Operating Temperature Range °C °F 工作温度 | -20° to 105° -4° to 221° | -20° to 105° -4° to 221° | -20° to 105° -4° to 221° |
| Flammability Rating of Housing Material 材料防火等级 Plastic(塑胶壳) Polycarbonate Contact(端子) Copper Alloy Silver plating and Tin plating | UL94 V-0 | UL94 V-0 | UL94 V-0 |

Your Best High Power Connection



E357218

Shenzhen Grid Power Connectors Co., Ltd

Tel: +86 0755-23208099 23205933

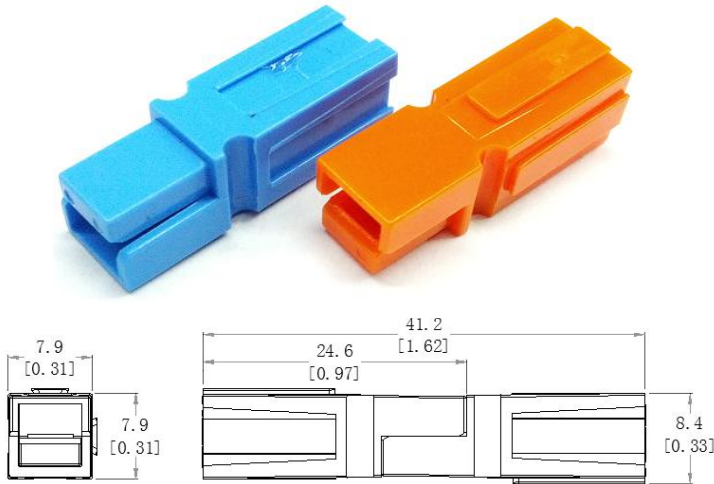
Address : The 2nd Floor, Building B&C, Plant 1, Senyang Technology Park, Guangming District, Shenzhen City, PRC
www.gridpower-conn.com www.grd-power.com

SPC15/45

Single Power Connector

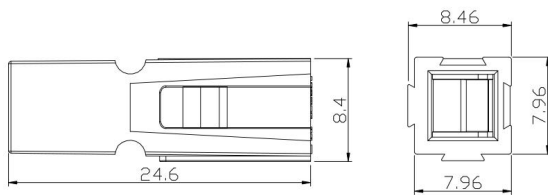
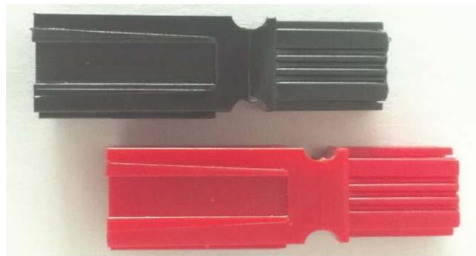


HOUSING/胶壳



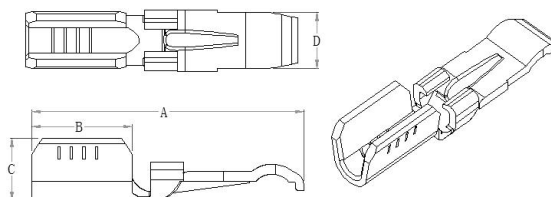
| Part Number 料号 | Housing Color 胶壳颜色 | |
|-------------------|-----------------------|--|
| SPC15/45-G1327 | Red 红色 | |
| SPC15/45-G1327G5 | Green 绿色 | |
| SPC15/45-G1327G6 | Black 黑色 | |
| SPC15/45-G1327G7 | White 白色 | |
| SPC15/45-G1327G8 | Blue 蓝色 | |
| SPC15/45-G1327G16 | Yellow 黄色 | |
| SPC15/45-G1327G17 | Orange 橙色 | |
| SPC15/45-G1327G18 | Gray 灰色 | |
| SPC15/45-G1327G21 | Brown 棕色 | |
| SPC15/45-G1327G22 | Pink 粉色 | |
| SPC15/45-G1327G23 | Purple 紫色 | |

HOUSING/胶壳



| Part Number 料号 | Housing Color 胶壳颜色 | |
|----------------------|-----------------------|--|
| SPC15/45-G1327-FP | Red 红色 | |
| SPC15/45-G1327G5-FP | Green 绿色 | |
| SPC15/45-G1327G6-FP | Black 黑色 | |
| SPC15/45-G1327G7-FP | White 白色 | |
| SPC15/45-G1327G8-FP | Blue 蓝色 | |
| SPC15/45-G1327G16-FP | Yellow 黄色 | |
| SPC15/45-G1327G17-FP | Orange 橙色 | |
| SPC15/45-G1327G18-FP | Gray 灰色 | |
| SPC15/45-G1327G21-FP | Brown 棕色 | |
| SPC15/45-G1327G22-FP | Pink 粉色 | |
| SPC15/45-G1327G23-FP | Purple 紫色 | |

CANTACT/接触件



Your Best High Power Connector



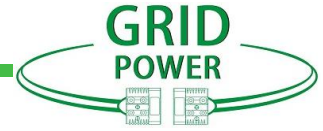
Connectors Co., Ltd

tel: +86 0755-23208099 23205933

Address : The 2nd Floor, Building B&C, Plant 1, Senyang
Technology Park, Guangming District, Shenzhen City, PRC
www.gridpower-conn.com www.grd-power.com

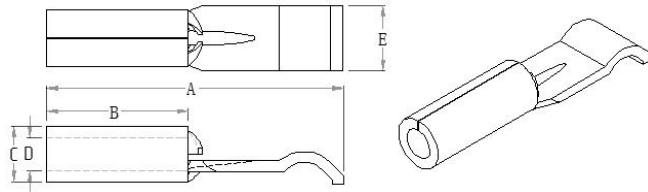
SPC15/45

Single Power Connector



| Part Number 料号 | Description 描述 | Wire Size/线径 | | -A- | | -B- | | -C- | | -D- | |
|-------------------|-------------------|--------------|----------|------|------|-----|------|-----|------|-----|------|
| | | AWG | sq. mm | mm | In. | mm | In. | mm | In. | mm | In. |
| R262G1 | Reel 卷轴 | 16/20 | 1.3/0.52 | 17.2 | 0.68 | 6.4 | 0.25 | 3.9 | 0.15 | 3.6 | 0.14 |
| R269G2 | Reel 卷轴 | 16/20 | 1.3/0.52 | 17.2 | 0.68 | 6.4 | 0.25 | 3.9 | 0.15 | 3.6 | 0.14 |
| R261G1 | Reel 卷轴 | 12/16 | 3.3/1.3 | 17.2 | 0.68 | 6.4 | 0.25 | 4.6 | 0.18 | 3.6 | 0.14 |
| R269G1 | Reel 卷轴 | 12/16 | 3.3/1.3 | 17.2 | 0.68 | 6.4 | 0.25 | 4.6 | 0.18 | 3.6 | 0.14 |
| R261G2 | Reel 卷轴 | 10/14 | 5.3/2.1 | 17.3 | 0.68 | 6.4 | 0.25 | 5.1 | 0.20 | 3.6 | 0.14 |
| R269G3 | Reel 卷轴 | 10/14 | 5.3/2.1 | 17.3 | 0.68 | 6.4 | 0.25 | 5.1 | 0.20 | 3.6 | 0.14 |
| R200G1L | Reel 卷轴 | 10/14 | 5.3/2.1 | 17.3 | 0.68 | 6.4 | 0.25 | 5.6 | 0.22 | 3.6 | 0.14 |
| R200G1H | Reel 卷轴 | 10/14 | 5.3/2.1 | 17.3 | 0.68 | 6.4 | 0.25 | 5.6 | 0.22 | 3.6 | 0.14 |

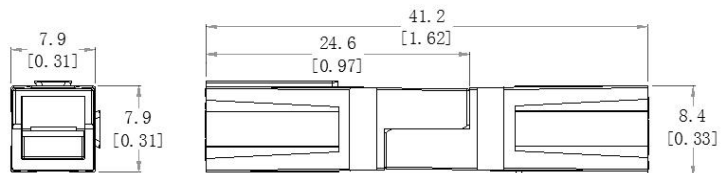
以上为镀锡料号。如需镀银处理，在原料号后面加“-S”。镀银为单粒



| Part Number 料号 | Description 描述 | Wire Size/线径 | | -A- | | -B- | | -C- | | -D- | | -E- | |
|-------------------|-------------------|--------------|----------|------|------|-----|------|-----|------|-----|------|-----|------|
| | | AWG | sq. mm | mm | In. | mm | In. | mm | In. | mm | In. | mm | In. |
| S1332 | Individual 单粒 | 16/20 | 1.3/0.52 | 16.3 | 0.64 | 7.8 | 0.30 | 3.1 | 0.12 | 1.8 | 0.07 | 3.6 | 0.14 |
| S1331 | Individual 单粒 | 12/16 | 3.3/1.3 | 16.3 | 0.64 | 7.8 | 0.30 | 3.7 | 0.15 | 2.6 | 0.10 | 3.7 | 0.15 |
| S1330 | Individual 单粒 | 10/12 | 5.3/3.3 | 16.3 | 0.64 | 7.1 | 0.28 | 4.8 | 0.19 | 3.0 | 0.12 | 3.7 | 0.15 |

以上为镀银料号。如需镀锡处理，在原料号后面加“-T”

PREMATE GROUND HOUSINGS/接地胶壳



| Part Number 料号 | Housing Color 胶壳颜色 |
|------------------|--------------------|
| SPC15/45-G1827G1 | Green 绿色 |

Your Best High Power Connection



E357218

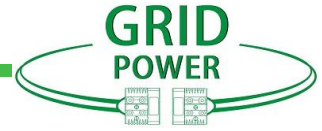
Shenzhen Grid Power Connectors Co., Ltd

Tel: +86 0755-23208099 23205933

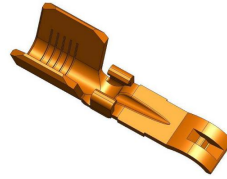
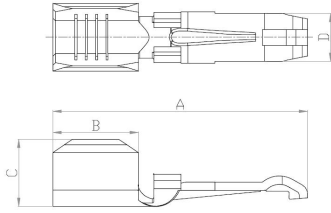
Address: The 2nd Floor, Building B&C, Plant 1, Senyang
Technology Park, Guangming District, Shenzhen City, PRC
www.gridpower-conn.com www.grd-power.com

SPC15/45

Single Power Connector



PREMATE GROUND WIRE CONTACTS/接地端子

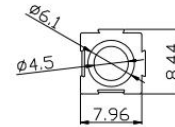
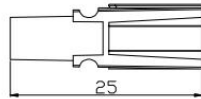


| Part Number 料号 | Description 描述 | Wire Size/线径 | | -A- | | -B- | | -C- | | -D- | |
|-------------------|-------------------|--------------|---------|------|------|-----|------|-----|------|-----|------|
| | | AWG | sq. mm | mm | In. | mm | In. | mm | In. | mm | In. |
| R1830G1 | Reel 卷轴 | 10/14 | 5.3/2.1 | 19.1 | 0.75 | 6.4 | 0.25 | 6.1 | 0.24 | 3.6 | 0.14 |

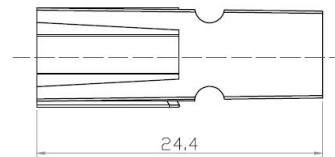
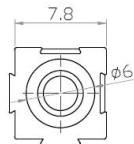
GROUND HOUSINGS/接地胶壳



| Part Number 料号 | Housing Color 胶壳颜色 |
|--------------------|--------------------|
| SPC15/45-G3-5691P1 | Green 绿色 |



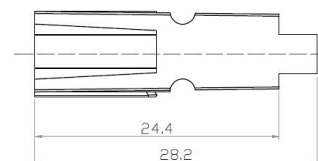
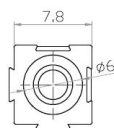
| Part Number 料号 | Housing Color 胶壳颜色 |
|--------------------|--------------------|
| SPC15/45-G3-5692P1 | Green 绿色 |



GROUND HOUSINGS/接地胶壳



| Part Number 料号 | Housing Color 胶壳颜色 |
|----------------|--------------------|
| G2-5936P1 | Red 红色 |
| G3-5936P1 | Black 黑色 |



Your Best High Power Connection



E357218

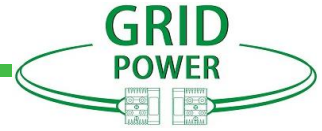
Shenzhen Grid Power Connectors Co., Ltd

Tel: +86 0755-23208099 23205933

Address: The 2nd Floor, Building B&C, Plant 1, Senyang
Technology Park, Guangming District, Shenzhen City, PRC
www.gridpower-conn.com www.grid-power.com

SPC15/45

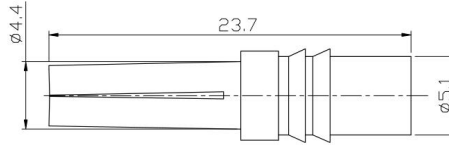
Single Power Connector



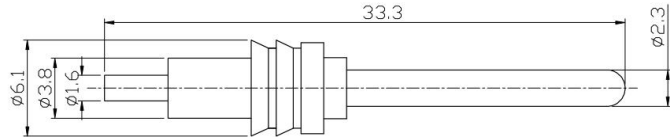
GROUND CONTACTS/接地端子



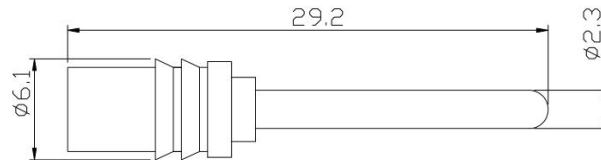
| Part Number 料号 | Description 描述 |
|----------------|----------------|
| G113920P1 | Tin Plated 镀锡 |



| Part Number 料号 | Description 描述 |
|----------------|----------------|
| G113934P1 | Tin Plated 镀锡 |



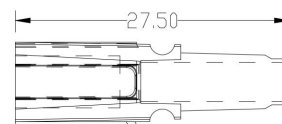
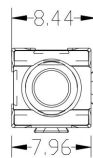
| Part Number 料号 | Description 描述 |
|----------------|----------------|
| G113919P1 | Tin Plated 镀锡 |



GROUND HOUSINGS/接地胶壳



| Part Number 料号 | Housing Color 胶壳颜色 |
|----------------|--------------------|
| SPC10-M-HSG | Green 绿色 |



Your Best High Power Connection



E357218



Shenzhen Grid Power Connectors Co., Ltd

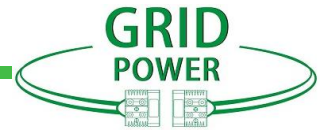
Tel: +86 0755-23208099 23205933

Address: The 2nd Floor, Building B&C, Plant 1, Senyang Technology Park, Guangming District, Shenzhen City, PRC

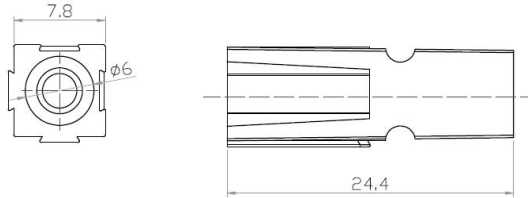
www.gridpower-conn.com www.grid-power.com

SPC15/45

Single Power Connector



| | |
|----------------|--------------------|
| Part Number 料号 | Housing Color 胶壳颜色 |
| SPC10-F-HSG | Green 绿色 |



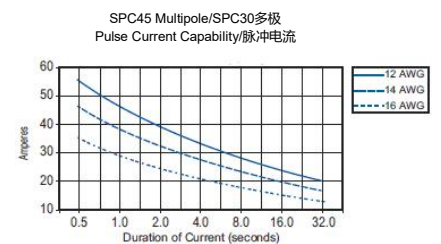
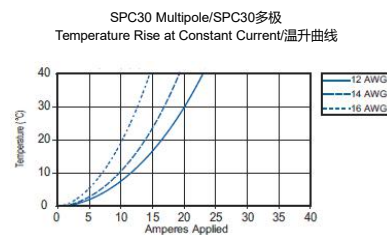
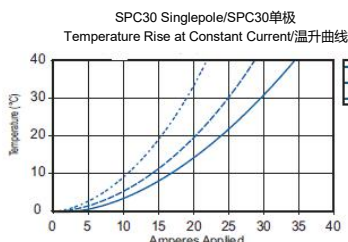
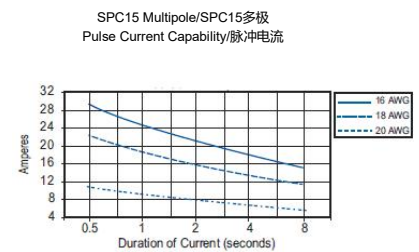
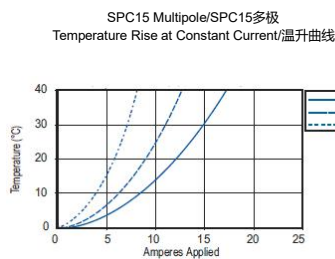
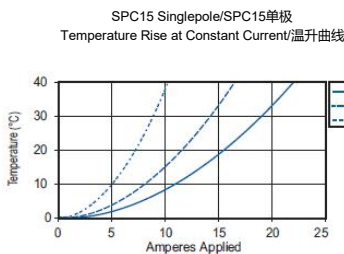
GROUND CONTACTS/接地端子



| Part Number 料号 | Wire Size/线径 | Description 描述 |
|----------------|--------------|----------------|
| S1310-M | 16-20AWG | Tin Plated 镀锡 |

| Part Number 料号 | Wire Size/线径 | Description 描述 |
|----------------|--------------|----------------|
| S1310-F | 16-20AWG | Tin Plated 镀锡 |

TEMPERATURE RISE CHARTS/温升测试



Your Best High Power Connection



E357218

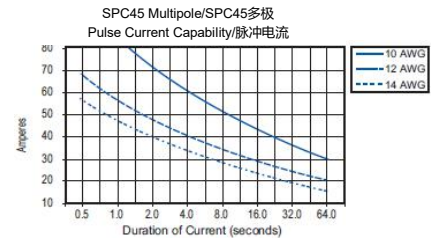
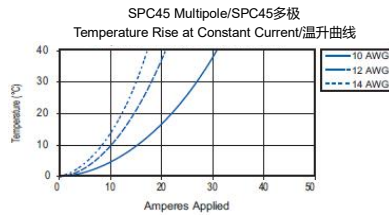
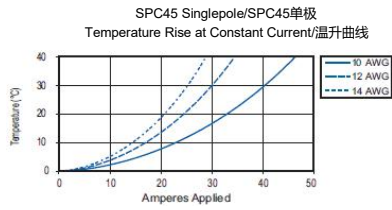
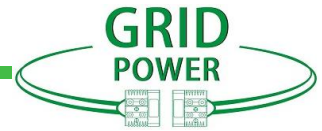
Shenzhen Grid Power Connectors Co., Ltd

Tel: +86 0755-23208099 23205933

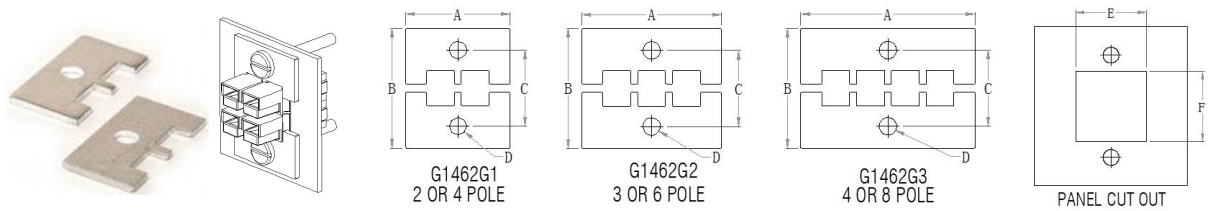
Address: The 2nd Floor, Building B&C, Plant 1, Senyang Technology Park, Guangming District, Shenzhen City, PRC
www.gridpower-conn.com www.grd-power.com

SPC15/45

Single Power Connector

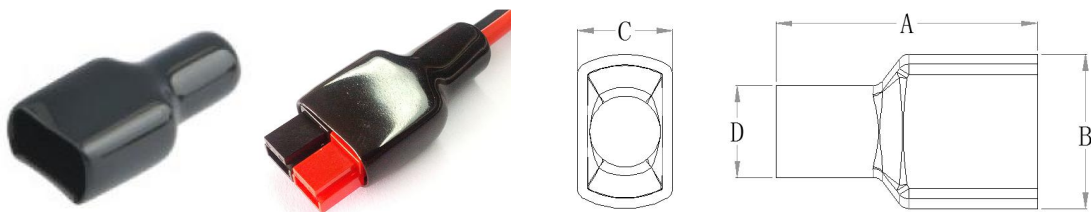


MOUNTING CLAMPS/安装支架



| Part Number 料号 | Number of Poles 极数 | -A- | | -B- | | -C- | | -D- | | -E- | | -F- | |
|-------------------|-----------------------|------|------|------|------|------|------|-----|------|------|------|------|------|
| | | mm | In. | mm | In. | mm | In. | mm | In. | mm | In. | mm | In. |
| G1462G1 | 2 Pole | 23.9 | 0.94 | 26.9 | 1.06 | 17.3 | 0.68 | 4.0 | 0.16 | 1.75 | 0.69 | 9.7 | 0.38 |
| | 4 Pole | 23.9 | 0.94 | 35.0 | 1.38 | 25.4 | 1.00 | 4.0 | 0.16 | 1.75 | 0.69 | 17.5 | 0.69 |
| G1462G2 | 3 Pole | 31.7 | 1.25 | 26.9 | 1.06 | 17.3 | 0.68 | 4.0 | 0.16 | 25.4 | 1.00 | 9.7 | 0.38 |
| | 6 Pole | 31.7 | 1.25 | 35.0 | 1.38 | 25.4 | 1.00 | 4.0 | 0.16 | 25.4 | 1.00 | 17.5 | 0.69 |
| G1462G3 | 4 Pole | 39.6 | 1.56 | 26.9 | 1.06 | 17.3 | 0.68 | 4.0 | 0.16 | 33.3 | 1.31 | 9.7 | 0.38 |
| | 8 Pole | 39.6 | 1.56 | 35.0 | 1.38 | 25.4 | 1.00 | 4.0 | 0.16 | 33.3 | 1.31 | 17.5 | 0.69 |

SHEATH/护套



| Part Number 料号 | Number of Poles 极数 | -A- | | -B- | | -C- | | -D- | |
|-------------------|-----------------------|------|------|------|------|-----|------|------|------|
| | | mm | In. | mm | In. | mm | In. | mm | In. |
| SPC45-SH-2 | 2 Pole | 38.8 | 1.53 | 18.6 | 0.73 | 12 | 0.47 | 11.5 | 0.45 |
| SPC45-SH-3 | 3 Pole | 38.8 | 1.53 | 26.5 | 1.04 | 12 | 0.47 | 11.5 | 0.45 |

Your Best High Power Connection



E357218

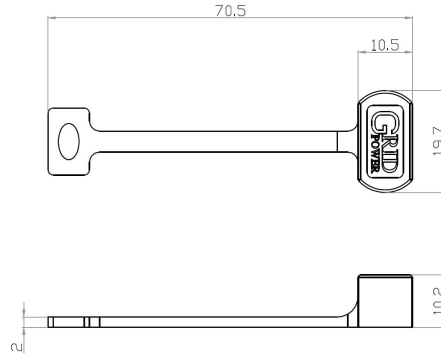
Shenzhen Grid Power Connectors Co., Ltd
Tel: +86 0755-23208099 23205933
Address: The 2nd Floor, Building B&C, Plant 1, Senyang
Technology Park, Guangming District, Shenzhen City, PRC
www.gridpower-conn.com www.grd-power.com

SPC15/45

Single Power Connector

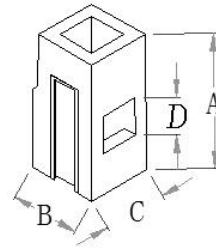
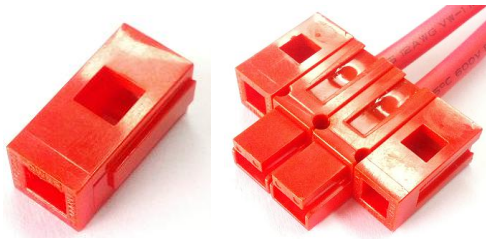


DUST CAP/防尘帽



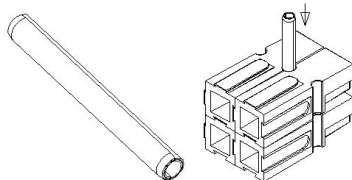
| | |
|----------------|----------|
| Part Number/料号 | Color/颜色 |
| G134G5 | Black 黑色 |

MOUNTING WING/固定柱



| Part Number 料号 | Color 颜色 | -A- | | -B- | | -C- | | -D- | |
|-------------------|-------------|------|------|------|------|-----|------|-----|------|
| | | mm | In. | mm | In. | mm | In. | mm | In. |
| G1399G8 | Blue 蓝色 | 16.7 | 0.66 | 8.45 | 0.33 | 8.0 | 0.31 | 4.5 | 0.18 |
| G1399G9 | Red 红色 | 16.7 | 0.66 | 8.45 | 0.33 | 8.0 | 0.31 | 4.5 | 0.18 |

RETAINING PINGS/定位销



| Part Number 料号 | Description 描述 | -DIN- | | -LENGTH- | |
|-------------------|-------------------|-----------|-------------|----------|------|
| | | mm | In. | mm | In. |
| G110G16 | 1-HIGH BLOCK | 2.36/2.51 | 0.093/0.099 | 6.35 | 0.25 |
| G110G17 | 2-HIGH BLOCK | 2.36/2.51 | 0.093/0.099 | 11.18 | 0.44 |

Your Best High Power Connection



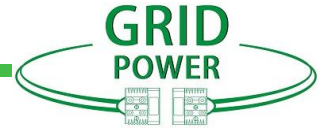
Shenzhen Grid Power Connectors Co., Ltd

Tel: +86 0755-23208099 23205933

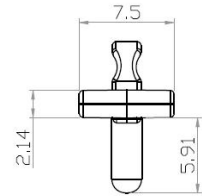
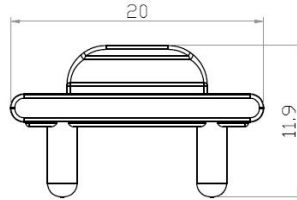
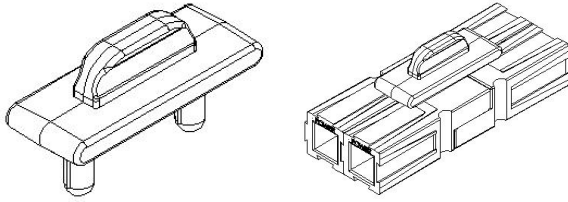
Address: The 2nd Floor, Building B&C, Plant 1, Senyang
Technology Park, Guangming District, Shenzhen City, PRC
www.gridpower-conn.com www.grd-power.com

SPC15/45

Single Power Connector

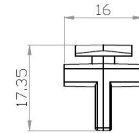
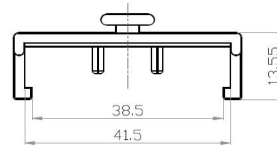
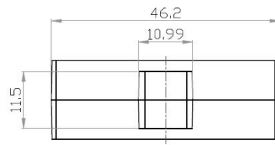
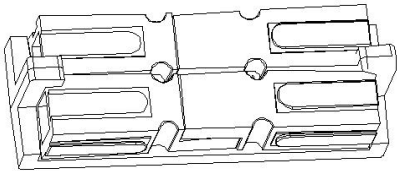


ENTION CLIP/



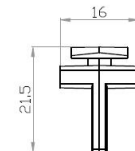
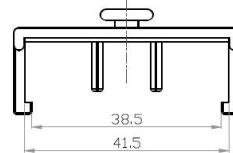
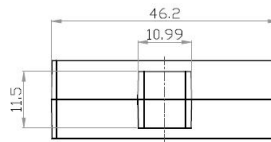
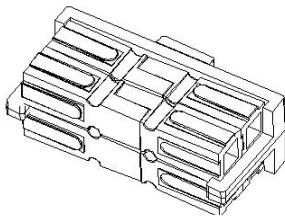
| Part Numb 料号 | Color 颜色 |
|--------------|----------|
| G110G68 | Black 黑色 |

BLOK LOK FOR 2 POLE/



| Part Numb 料号 | Color 颜色 |
|--------------|----------|
| G110G21 | Black 黑色 |

BLOK LOK FOR 4 POLE/



| Part Numb 料号 | Color 颜色 |
|--------------|----------|
| G110G12 | Black 黑色 |

Your Best High Power Connection



E357218

Shenzhen Grid Power Connectors Co., Ltd

Tel: +86 0755-23208099 23205933

Address: The 2nd Floor, Building B&C, Plant 1, Senyang Technology Park, Guangming District, Shenzhen City, PRC

www.gridpower-conn.com www.grd-power.com